



---

## Performance & Burn In Test Rev. 1.0

---

### Table of Contents

---

#### 1. Overview

#### 2. Performance Measurement Tools and Results

- 2.1 Test Platform
- 2.2 Test target and Using CFast Card SSD
- 2.3 Install Hardware
- 2.4 BIOS & Windows 7 OS environment setup
- 2.5 CrystalDiskMark 3.0.1 x64
- 2.6 AS SSD Benchmark 1.6
- 2.7 HD Tune pro 5.0
- 2.8 ATTO Disk BenchMark

#### 3. Burn In Tests and Results

- 3.1 BurnInTestv7.0 Pro

#### 4. Summary

# U423D / USB 3.0&SATA to mSATA SSD with 2.5" Housing

---

## 1. Overview

The ST664MD riser card contains 1-Port CFast connector, and SATA 22-pin standard connector, built-in JMicron 330H bridge controller IC. Provide SATA II interface to IDE (PATA interface) conversion. Purpose of this test is to show ST664MD IDE performance and Read/Write stability.

## 2. Performance Measurement Tools and Results

### 2.1 Test Platform

M/B : GIGABYTE [GA-X58A-UD3R](#)  
CPU : Intel [i7-930](#), 2.8MHz/ 8G Cache/ 4.8GT  
Memory : Kingston [KVR1333D3N9/2G](#), 1333MHz,2G Byte DIMM\*2  
ATX Power : TC START W500, [500W ATX](#),12V V2.2 Power Supplier  
Graphic : Asus NVIDIA, [Geforce 210](#)  
OS : Microsoft [Windows 7 64bit OS](#)

### 2.2 Test target(ST664MD Converter) and Using CFast Card SSD



ST664MD Adapter

Bottom Side + CFast Card

CFast Card

### 2.3 Install Hardware

insert Apacer 16GB([APCFA016GT6HS-T](#)) into ST664MD's CFast connectors, and then connected to the [GA-X58A-UD3R](#) motherboard SATA II Port.

### 2.4 BIOS & Windows 7 OS environment setup

2.4.1 input BIOS(Basic Input/Output Setup) – Change IDE Mode into AHCI Mode

Notice: IDE **don't support SATA Interface instructions - TRIM,NCQ**

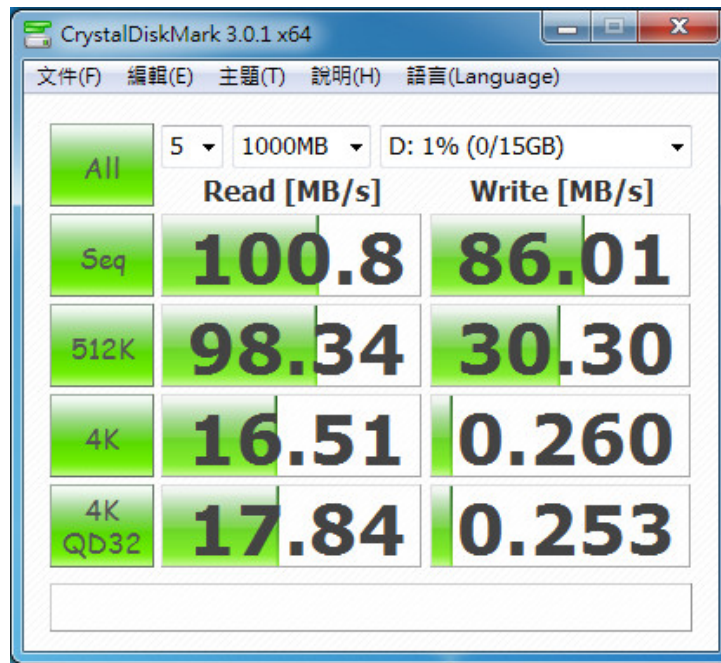
2.4.2 Windows 7 formatted raid card NTFF Mode and don't install any program

# U423D / USB 3.0&SATA to mSATA SSD with 2.5" Housing

## 2.5 CrystalDiskMark 3.0.1 x64

※Benchmark (Sequential **Read & Write** / default size = **1MB**)

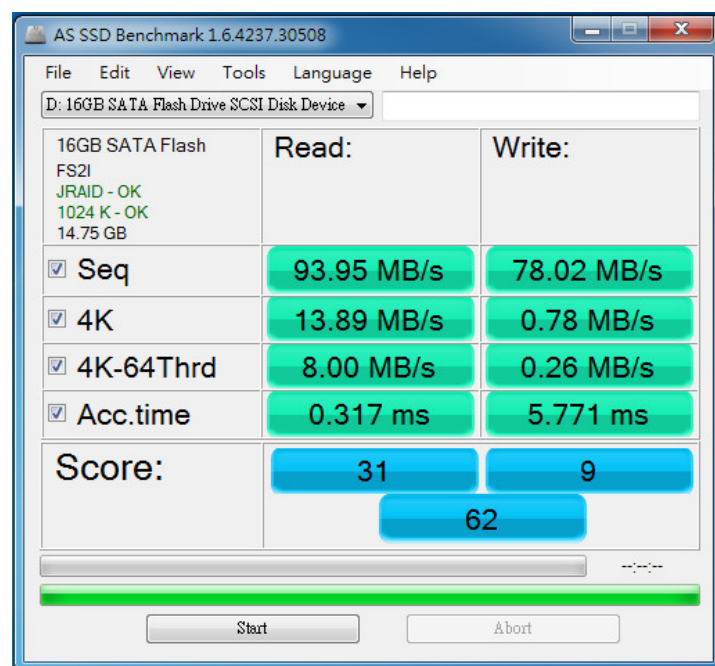
2.5.1 Used Apacer 16GB(APCFA016GT6HS-T) performance as below:



## 2.6 AS SSD Benchmark 1.6

※Benchmark (**Read & Write** by MB/s, default block size = **16MB**)

2.6.1 Used Apacer 16GB(APCFA016GT6HS-T) performance as below:

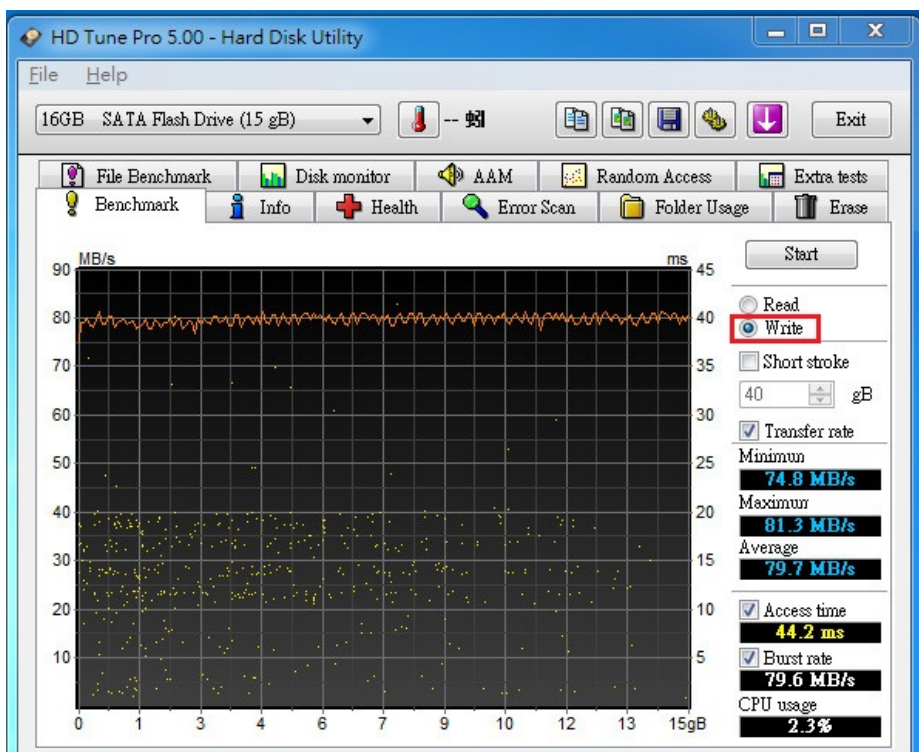
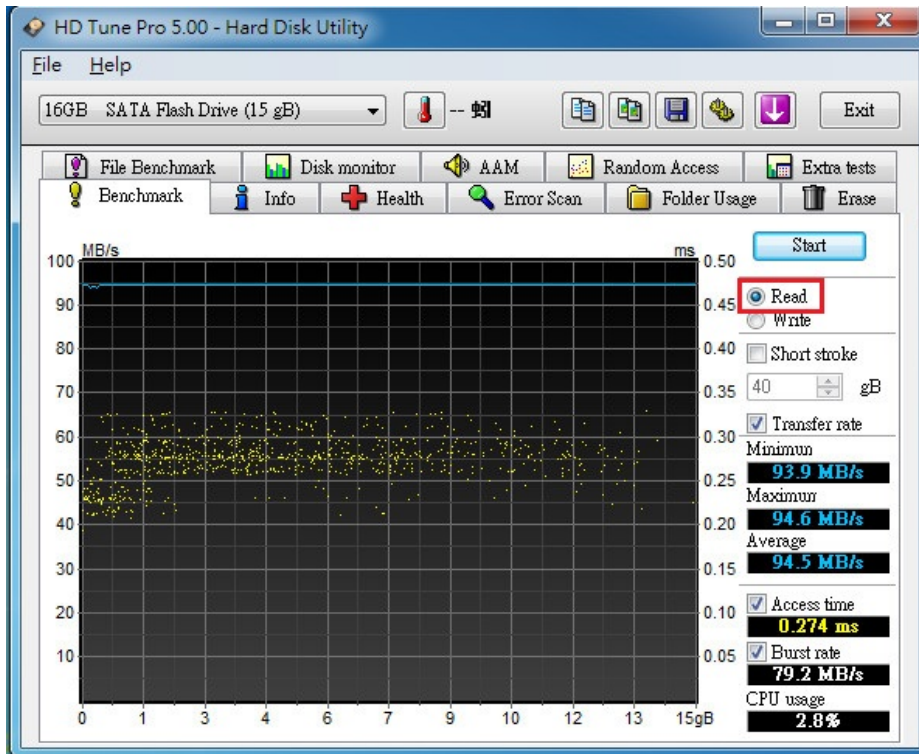


# U423D / USB 3.0&SATA to mSATA SSD with 2.5" Housing

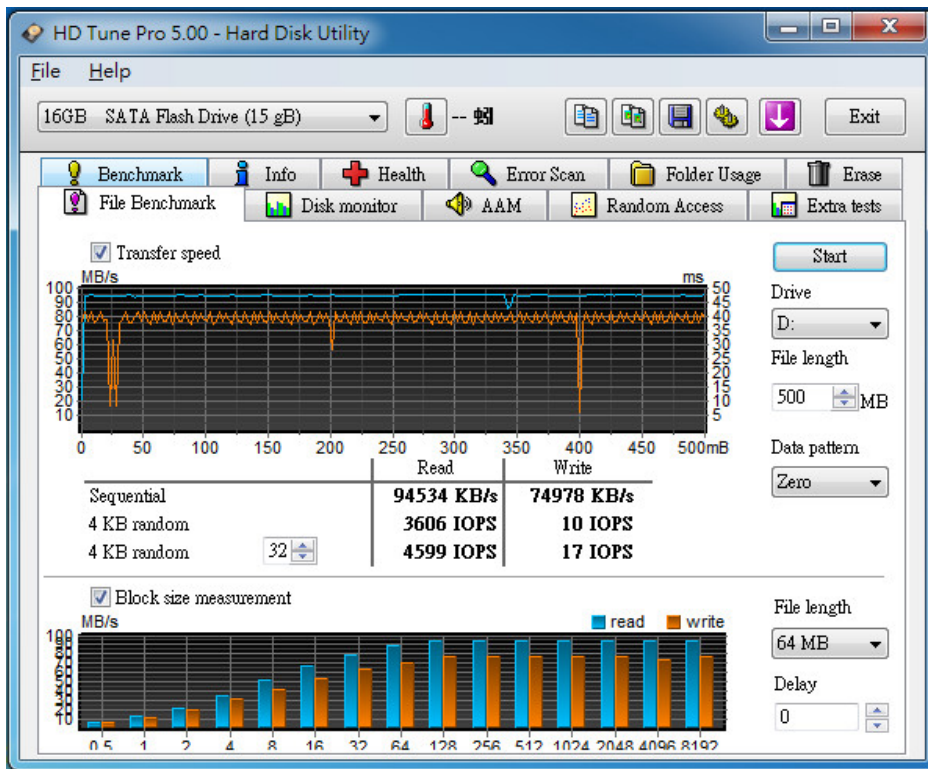
## 2.7 HD Tune.pro 5.0

※Benchmark (Sequential Read / default block size = 64KB)

2.7.1 Used Apacer 16GB(APCFA016GT6HS-T) performance as below:

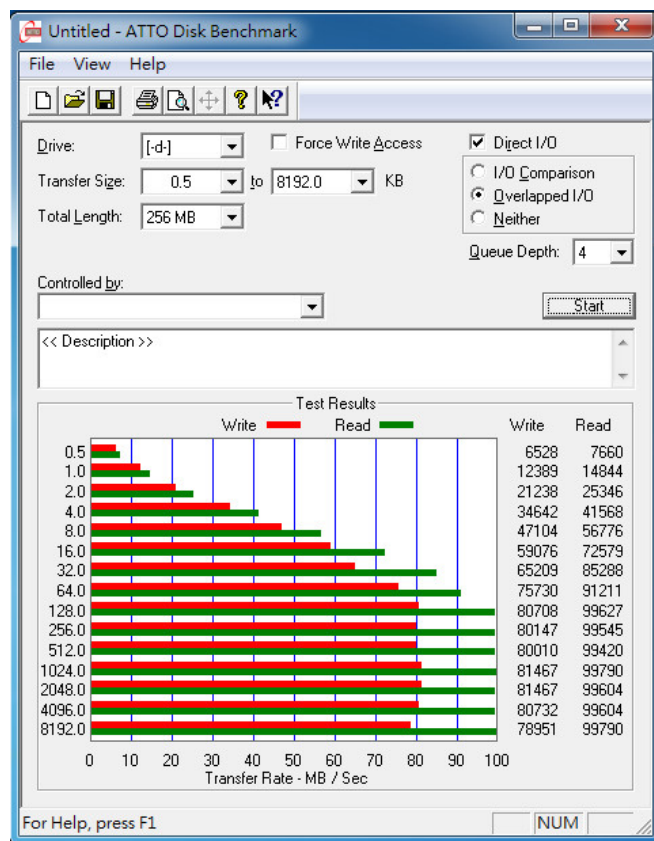


# U423D / USB 3.0&SATA to mSATA SSD with 2.5" Housing



## 2.8 ATTO Disk BenchMark

2.8.1 Used Apacer 16GB(APCFA016GT6HS-T) performance as below:

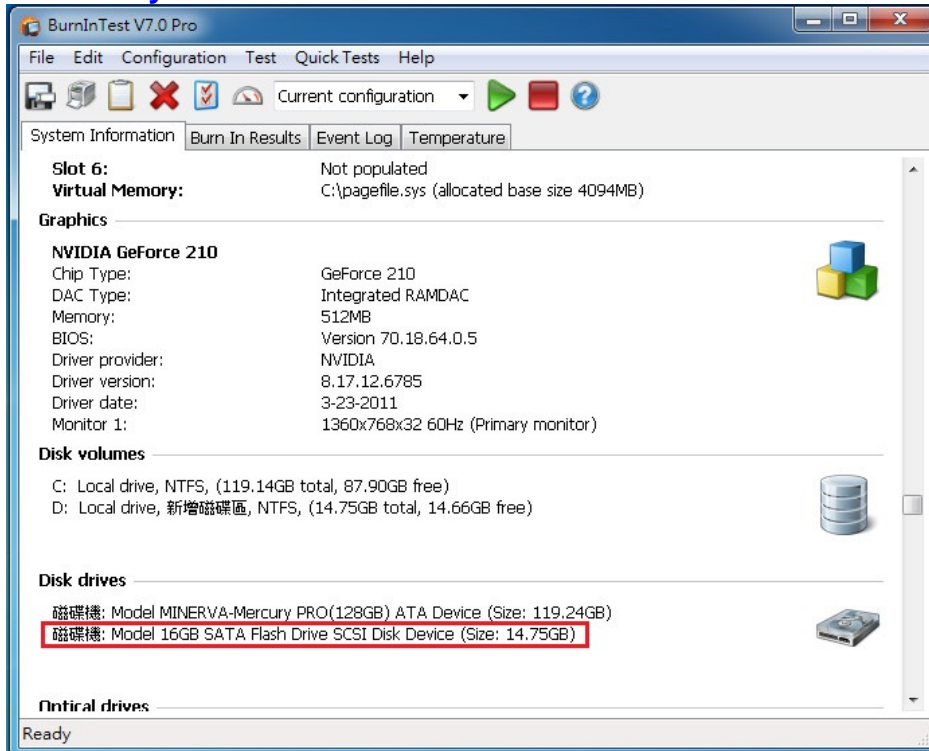


# U423D / USB 3.0&SATA to mSATA SSD with 2.5" Housing

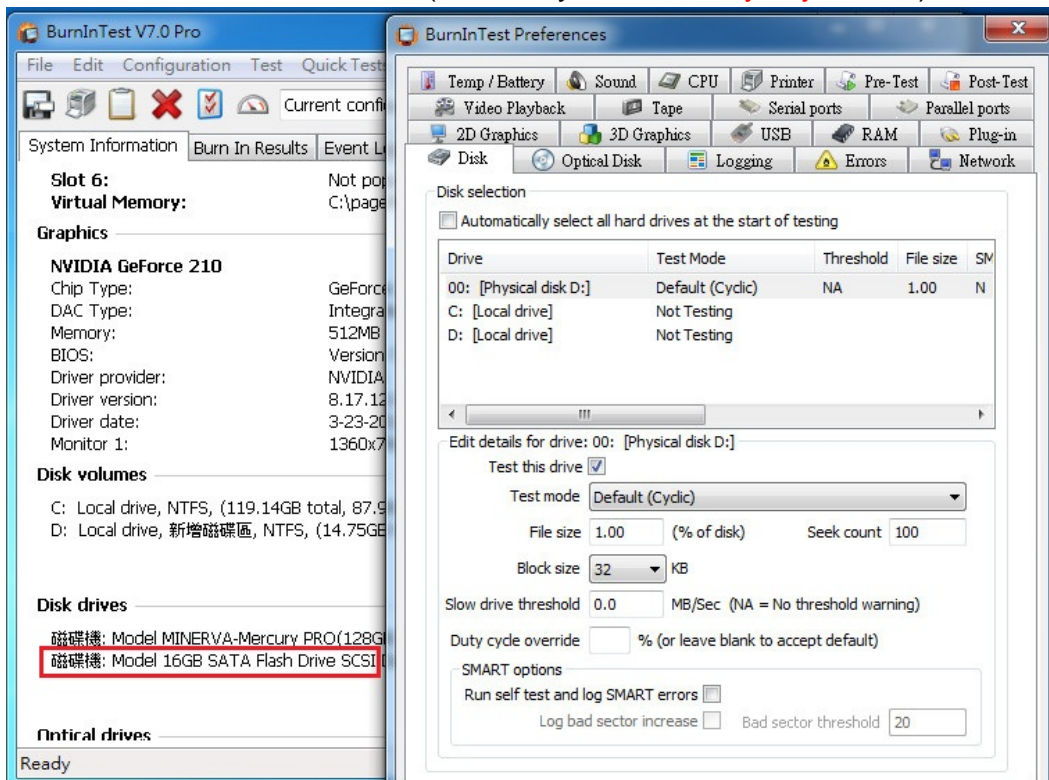
## 3. Burn In Tests and Results

### 3.1 BurnInTest v7.0 Pro

#### 3.1.1 system information as below:

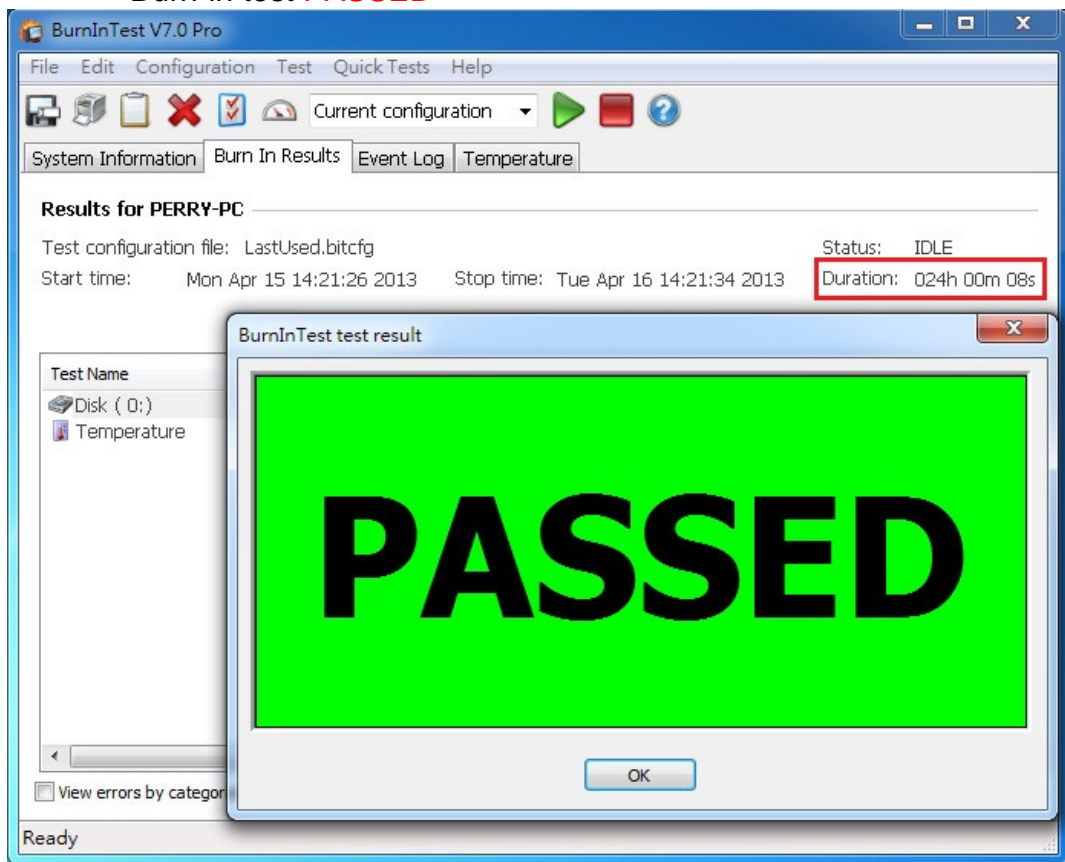


#### 3.1.2 show Disk test mode(default cyclic -- 10 ways cycle test)



# U423D / USB 3.0&SATA to mSATA SSD with 2.5" Housing

3.1.3 show ST664MD with Apacer 16GB(APCFA016GT6HS-T) 24-hour Burn-in test **PASSED**



## 4. Summary

- SATA to IDE convert, following ATA/ATAPI-7, Current spec I/O speed, max. to 133MB/s.
- ST664MD can be used a **Master drive** only in primary or secondary (can't configure with slave drive)
- I/O performance of ST664MD adapter is based on CFast Card SSD